



Construction Practices Short Blended Course



CONSTRUCTION PRACTICES

Civil Engineering Construction

- Plant and methods
- Safety
- Quality
- Environmental Protection

for earthworks, roading, foundations, structures and underground systems



COURSE DETAILS

- First half Semester 2 2015 (7 weeks)
- Full syllabus
- 98 students
- Blended Learning
- Active Learning Room







APPROACH

Online Resources

Videos, Readings, Website links



Class Sessions

Tests (5 x 6%), Group Activities, Guest Speakers

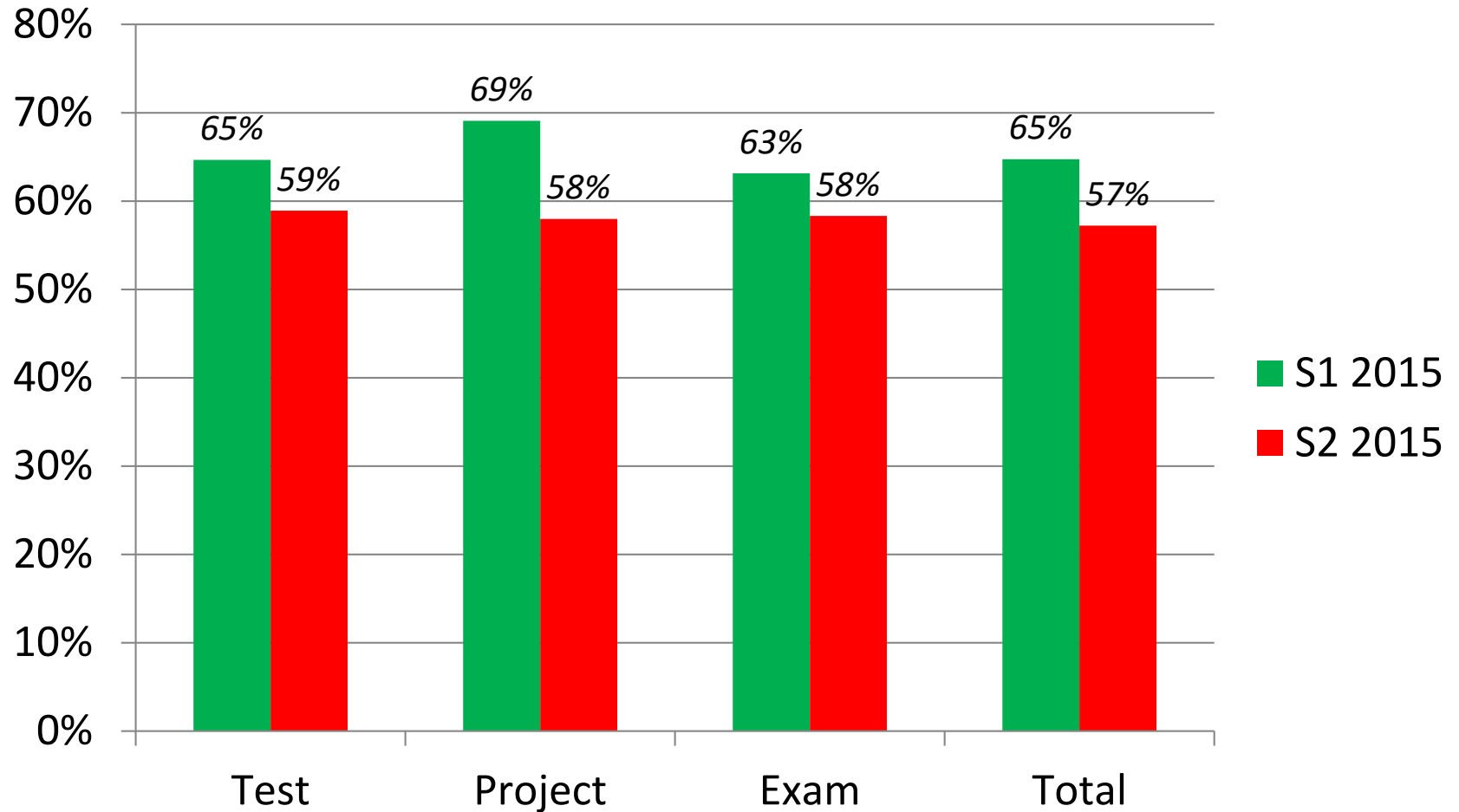
Project (30%)

Construction project plan

Exam (40%)

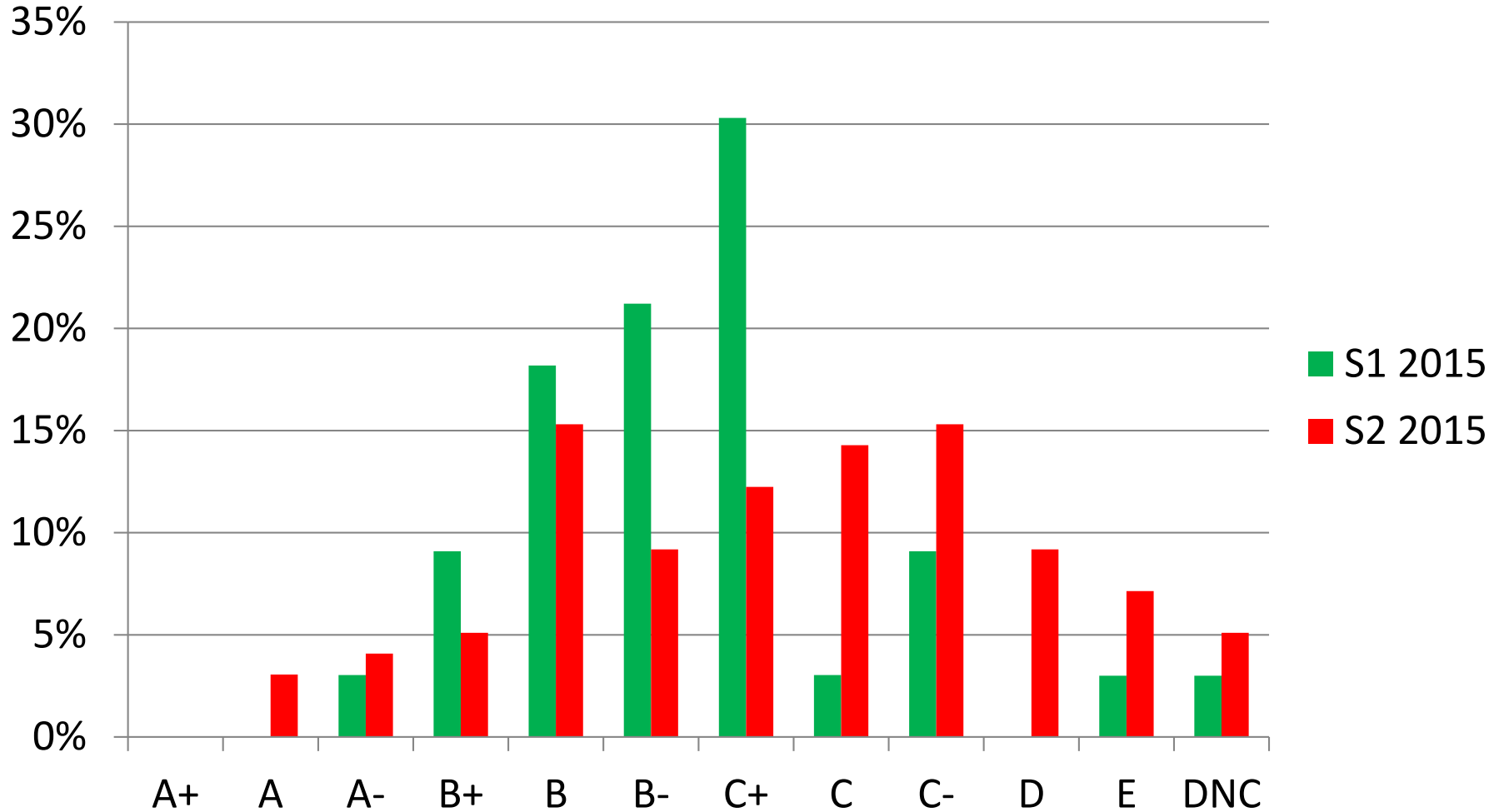


RESULTS - CLASS AVERAGES





RESULTS – FINAL GRADES





ISSUES

- No time for site visits
- Students did not do twice as much study
- Less spare time to do project properly
- Could not split project into two parts
- Poorer performance
- More students dropping out
- Class too big for one tutor to manage activities